



CITY OF GLEN COVE

LEAD SERVICE LINE REPLACEMENT PROGRAM

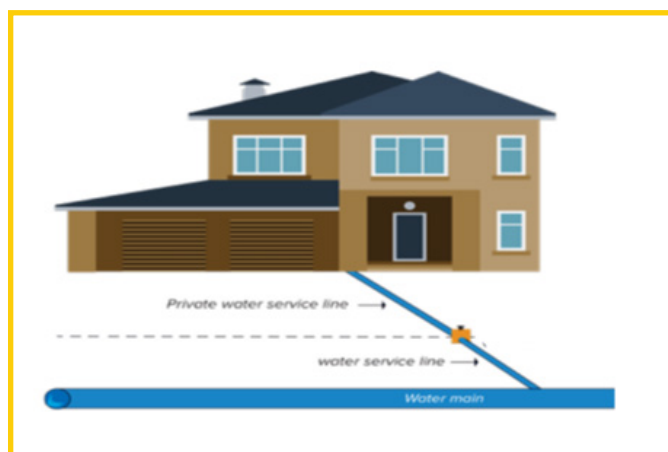
RESIDENT INDICATION OF INTEREST

The City of Glen Cove has entered into a reimbursement program with the NYS Department of Health that will allow the City to replace lead drinking water service lines at no cost to qualifying property owners. Drinking water can be a source of lead exposure. Service pipes that contain lead can corrode, causing lead to enter drinking water.

The presence of a lead service line does not always mean a home has a lead issue. However, lead in drinking water can be a problem: The U.S. Environmental Protection Agency (EPA) estimates that drinking water contaminated with lead can contribute to 20 percent or more of a person's total exposure to lead. Infants who consume mostly mixed formula can receive 40 – 60 percent of their total exposure to lead from drinking water.

WHAT WILL THE LEAD SERVICE LINE REPLACEMENT PROGRAM DO?

If you have a lead service line, grant funds can be used to replace the entire length of residential lead service lines, from the municipal water main to the



residence, in an effort to reduce the amount of lead in your drinking water.

You can inspect your own service line by following the instructions on the back of this sheet, or you can contact Rocco Graziosi at the City of Glen Cove at (516) 676-4402 or email rocco@glencoveny.gov to set up an appointment to have qualified City of Glen Cove staff inspect your service line. **If you perform a scratch test on your own line and discover lead, please call for a Program application.**

If the City conducts the test and your home lead service line, you will be contacted to complete an application for participation in the Program.



CITY OF GLEN COVE

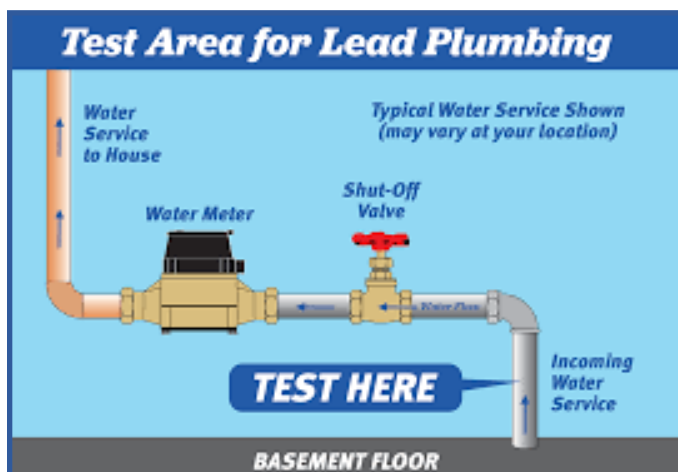
LEAD SERVICE LINE REPLACEMENT PROGRAM

The City of Glen Cove has received funding from the NYS Department of Health that will allow the City to replace lead drinking water service lines at no cost to property owners. You can test your line yourself or have City staff come and test it for you.

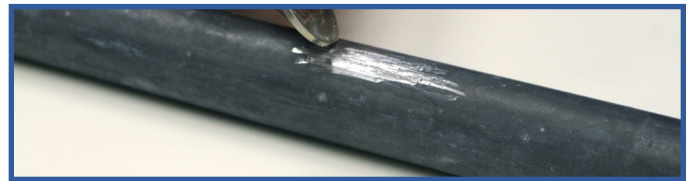
Do you want to do a quick scratch test on your own? Follow the instructions below to determine whether or not you have a lead service line.

HOW TO IDENTIFY A TEST AREA

Identify a test area on the service line between the point where it comes into the building and the inlet valve. If the pipe is covered or wrapped, expose a small area of the pipe. Use the flat edge of a screwdriver or other tool to scratch through any corrosion that may have built up on the outside of the pipe.



ONCE A TEST AREA IS IDENTIFIED, INSPECT THE SERVICE LINE TO DETERMINE THE MATERIAL



Lead pipes are dull gray and very soft and look like a new nickel when scratched or sanded.



Copper pipes look like a new penny when scratched or sanded.



Galvanized pipes are dull gray and a strong magnet will stick to the pipe.



Plastic service lines are typically white.